



How to Use Excel Plug-in

SMS INDIA HUB

Plot No – 16, Rajat Business Chamber, Opp.

GK Palace Hotel, MP Nagar Zone – II

Bhopal – 462011 – MP

Info@smsindiahub.in | support@smsindiahub.in



Login into SMS INDIA HUB Account

A screenshot of the SMS INDIAHUB login interface. At the top left is the SMS INDIAHUB logo. To the right of the logo are links for "Free Sign Up" (with a person icon) and "Forgot Password?" (with a padlock icon). Below these links is a white box with a grey header that says "Registered User Login Here!". Inside this box are two input fields: "Username" and "Password". At the bottom left of the box is a checkbox labeled "Remember me". At the bottom right is a "Sign In" button with a person icon.

1st Click on Excel Plug-in Tab



SMS API Documents **Excel Plugin**

Send SMS

- ✉ Compose SMS
- ✉ Compose Optin SMS
- 📁 SMS From Excel
- A Manage Sender ID
- A Manage Template

Contacts

- 🗃 Manage Groups
- ▼ Import Contacts
- ▲ Export Contacts

Reports

- 📄 Campaign Report
- 📅 My Schedule

Excel SMS Plugin

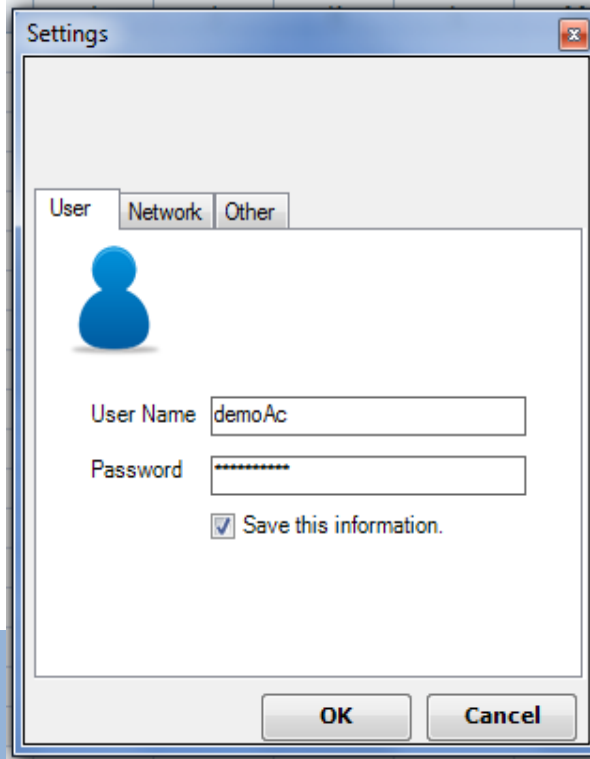
[Excel SMS Plugin](#)

Supported Version of Excel plugin: Office 2007/ office 2010
Supported Operating system: XP with SP3/Win7/Win8
Essentials:
(1).net Framework required: Ver 4.0 - [Download Link](#)
(2) VSTO Runtime (Only required for Office 2007 users) - [Download link](#)

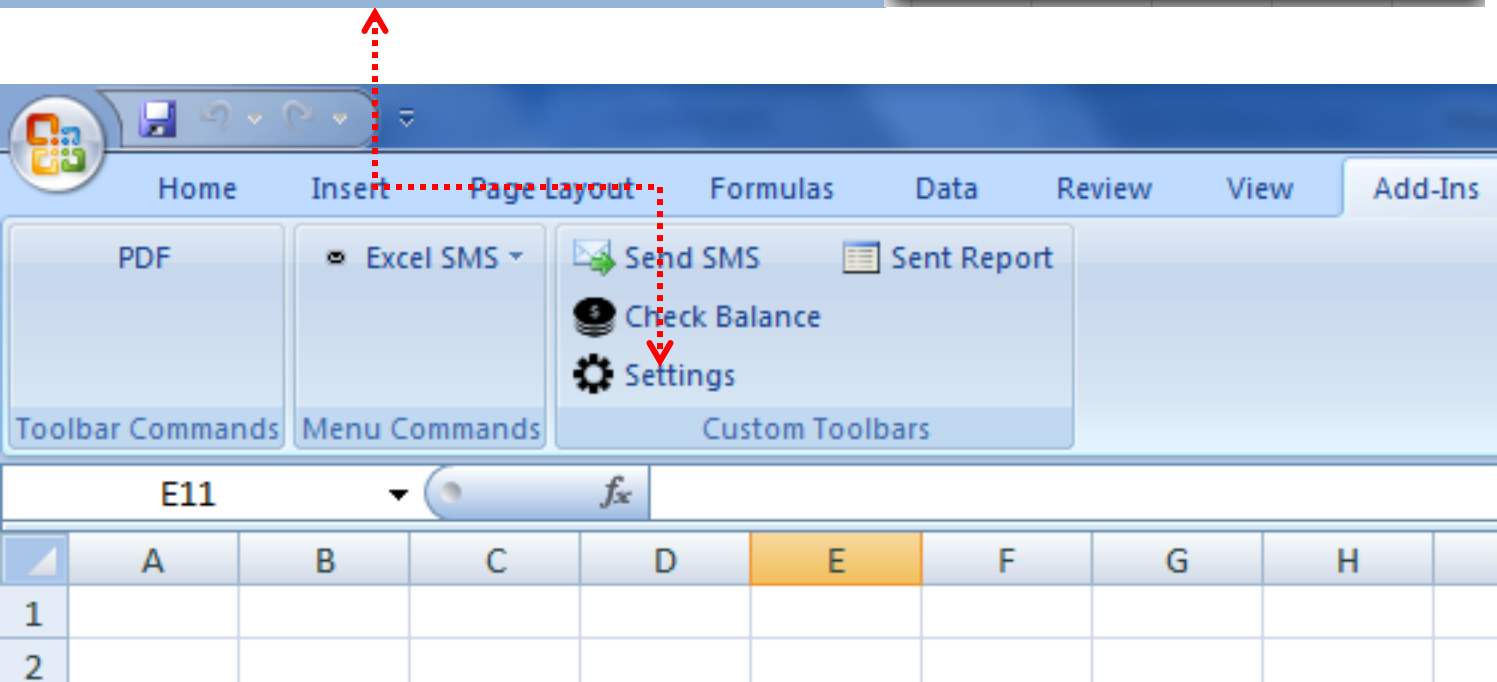
4th down Excel Plug-in and Run

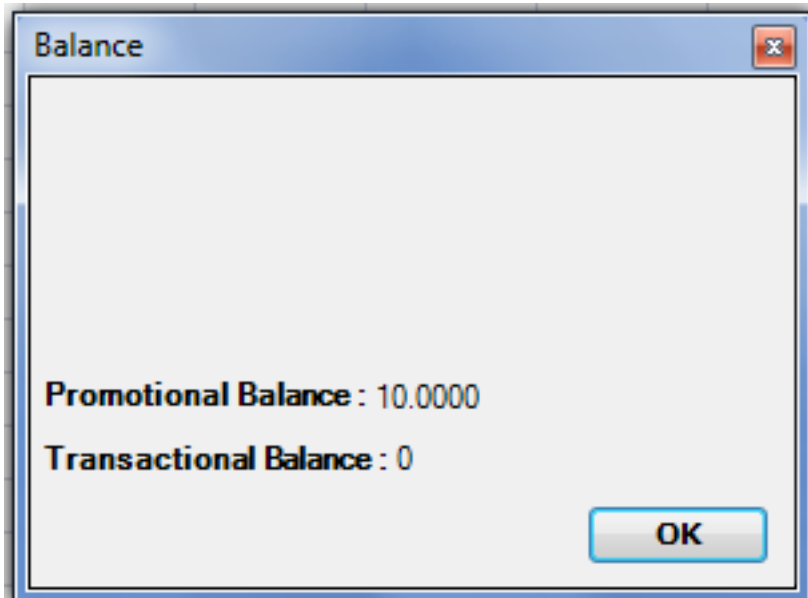
2nd you need to download .NET Framework on your computer

3rd you need to download VSTO Runtime

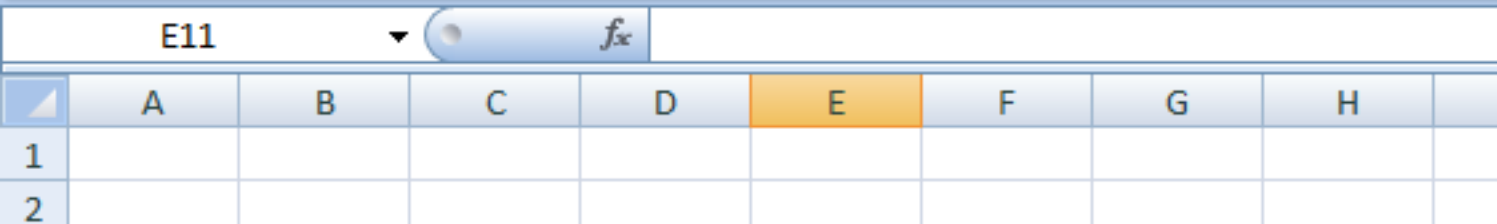
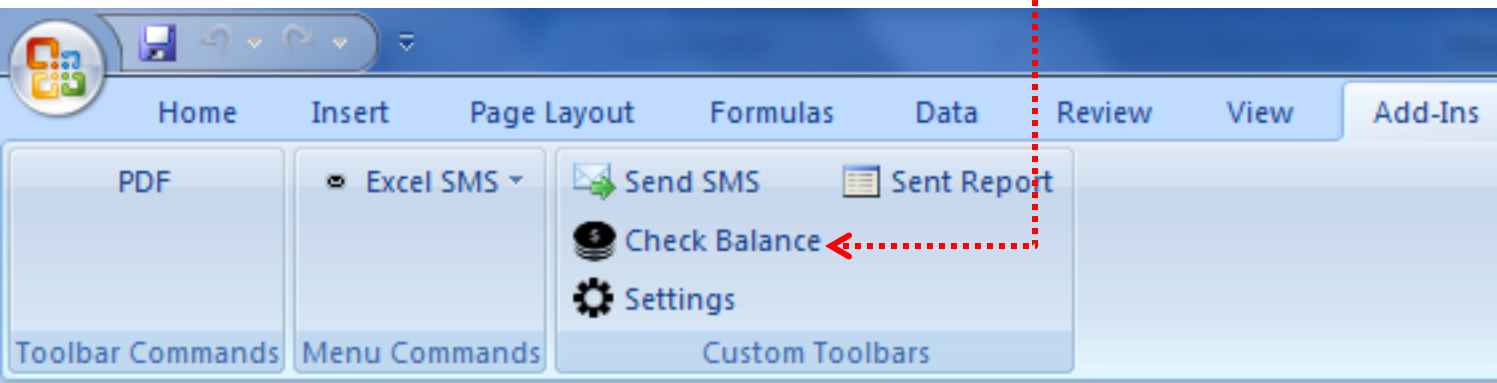


Click on Setting and you will get settings popup to put your username and password





Click here to check you're a/c balance



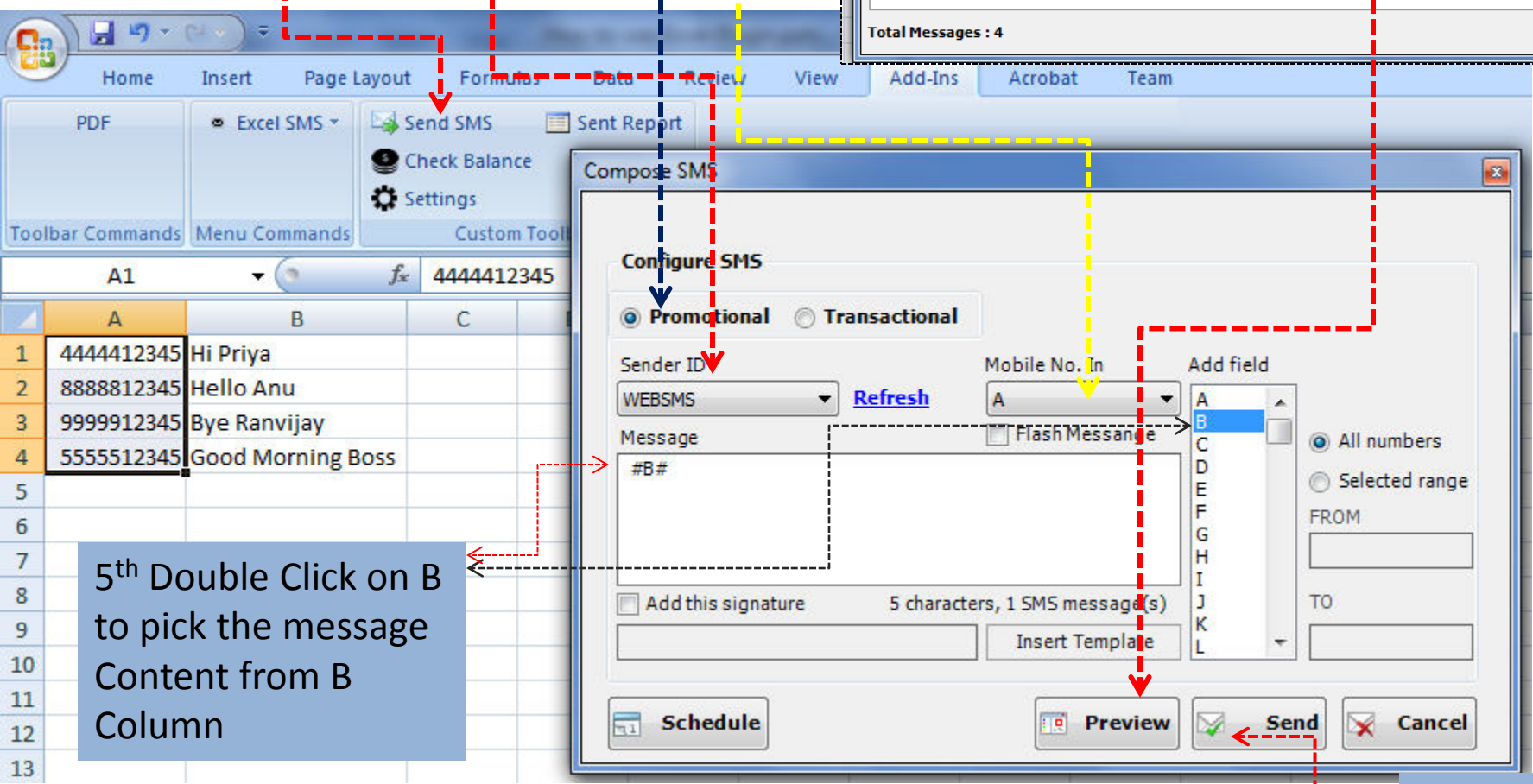
2nd Choose your Route

3rd Select Sender ID

4th Mobile No.

1st Click on Send SMS Button and Compose SMS box will appear

6th Click on Preview



The screenshot shows the Excel SMS software interface. The 'Compose SMS' dialog box is open, showing the 'Configure SMS' section. The 'Promotional' radio button is selected. The 'Sender ID' is set to 'WEBSMS', 'Mobile No.' is 'A', and the 'Message' is '#B#'. The 'Flash Message' checkbox is unchecked. The 'Add field' dropdown is set to 'B'. The 'Preview' button is highlighted with a red arrow. The 'Send' button is also highlighted with a red arrow. The 'Preview Numbers and Messages' window is open, showing a table of 4 messages.

Sno.	Mobile No.	Message
1	914444412345	
2	918888812345	
3	919999912345	
4	915555512345	

Total Messages : 4

5th Double Click on B to pick the message Content from B Column

7th Send



Thank you very much